



RESCUE ROYALE



MISSION ALERT

Thank you for joining the inaugural Rescue Royale, a fundraiser stream-a-thon taking place Sept. 9th to Oct. 16th! You'll be joining gamers and streamers across the country who will be playing games and raising funds to help people affected by extreme weather events, natural disasters, and countless other crises. You'll have chances to earn prizes, win giveaways and be featured as part of the broadcast! There are two ways to join:

- 1) [Participate in the fundraiser stream-a-thon on Tiltify](#). Join as a fundraiser to raise lifesaving funds for disaster relief. You choose the game you want to play to earn prizes and chances to be featured on the Rescue Royale broadcast. You can fundraise solo or alongside a team for your local Red Cross disaster relief. Using [CrowdControl](#) can also take it to the next level!
- 2) [Register and compete in the Fall Guys Tournament](#). Be a part of the ultimate knockout for disaster relief by joining the tournament! There will be special prizes and chances to be featured as part of the Rescue Royale Tournament Broadcast.

STEPS TO REGISTER FOR THE RESCUE ROYALE

- i. Visit www.tiltify.com/redcross/rescue-royale
- ii. Click to register and select your local Red Cross region
- iii. Finalize and publish your fundraiser
- iv. Host your charity stream campaign between Sept. 9th and Oct. 16th
- v. (Optional) [Register to compete in the Fall Guys Tournament](#)



The Top 20 competing in the Fall Guys Tournament will earn a trip to play at the HyperX Esports Arena in Las Vegas as part of the Rescue Royale Finale!

THE RESCUE ROYALE TOURNAMENT – FALL GUYS TO THE RESCUE!

Register for the Tournament Here: <https://www.hyperxesportsarenalasvegas.com/rescue-royale>

PHASE I – PRE-QUALIFIERS (QUALIFY TO COMPETE)

Sept. 9th – Sept. 26th

Host Your Rescue Royale Charity Stream

AND

Raise \$350+ for Disaster Relief

AND

Make Top 115 Skill-Based Leaderboard

PRIZES TO WIN

Entry to the Rescue Royale Qualifier and the Allied Esports Featured Broadcast

Special Rescue Royale T-Shirt and Pin

Chance to Win Special Giveaways

PHASE II – QUALIFIERS (TOP 20 SELECTED)

Saturday, Oct. 2nd

Raise \$700+ Between Phase I and Phase II

AND

Make Top 20 Skill-Based Leaderboard

PRIZES TO WIN

Win a Weekend Trip to Las Vegas

Compete in the Rescue Royale Finale Broadcast Saturday, Oct. 16th at the HyperX Esports Arena

Be featured on the Allied Esports Twitch

PHASE III – FINALS IN VEGAS (TOP 20 COMPETE)

Saturday, Oct. 16th

Rank in the Top 3
Skill-Based Leaderboard

PRIZES TO WIN

Special Trophy + Grand Prize TBA



[Add CrowdControl to your Fall Guys Charity Stream](#) as you compete to help you qualify!

Need Help? Contact charitystream@redcross.org. You can also visit the official Red Cross Discord for help and resources via www.discord.gg/redcross or follow us on Twitter at [@RedCrossGaming](https://twitter.com/RedCrossGaming).



WHY COME TO THE RESCUE

Your participation and support will help provide both immediate and long-term relief to neighbors in need and better prepare your local Red Cross for future disasters. You can make a real difference for those left in the wake of disaster by helping fundraise for the suggested following:

Raise \$100 = 10 Meals for Someone in Need

Raise \$350 = Deploy an Emergency Response Vehicle (ERV)

Raise \$700 = Cover a Local Disaster Response

Raise \$1,000 = 5 Days of Food and Shelter for a Family

Raise \$10,000 = Open a Shelter

When we come together as a streaming community, we can use our voice and creativity to provide lifechanging support to those impacted by disasters and to better prepare communities for future disasters.

EVERY DONATION MAKES A DIFFERENCE

Every bit of support goes a long way in helping provide comfort, hope and relief. Here are some suggested donation dollar amounts you can encourage during your charity stream to help provide disaster relief.



\$5 = Comfort Kit + Face Mask and Hand Sanitizer

Comfort kits, stored and ready for distribution nationwide, contain the basic personal supplies someone would need in the aftermath of a disaster.



\$10 = 1 Hot Meal in Time of Need

These nourishing meals that include a main course, snacks and a drink are distributed at shelters or through mobile feeding in disaster impacted communities.



\$20 = Full Day of Food

Provides breakfast, lunch, and dinner to someone in need in the wake of a disaster.



\$50 = Full Day of Shelter

Provides a full day of food and shelter for someone in need in the wake of a disaster.



\$200 = Full Day of Shelter for a Family

Provides a full day of food and shelter for a family of 4 in the wake of a disaster.

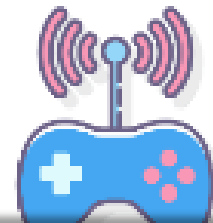
EVERY 8 MINUTES

the Red Cross responds to a disaster.

Coping with relentless disasters amid the pandemic, families spent **more nights in emergency lodging** this year than any other over the past decade.



Every hour, we help about **1,000 people facing emergencies**—disaster survivors, patients needing blood and more.



You can use the [CrowdControl Twitch extension](#) as part of your Tiltify fundraiser for the Rescue Royale to help hit your goals by having supporters sabotage your gameplay LIVE with their donations! Check out [how to add it to your Tiltify Fundraiser!](#)

HOW TO GET STARTED ON TILTIFY



Whether you are new to Tiltify or already have an account, you can set up a Rescue Royale fundraiser in 10 easy steps:

1. [Create](#) a Tiltify account or [sign into](#) your existing one. You can also sign up directly with your Twitch account.
2. Visit www.tiltify.com/redcross/rescue-royale to register and create your fundraiser.
3. Once signed in, you can select your specific local region that you want your fundraising efforts to go to.
4. Enter the required basic information for your fundraiser and livestream details. You can always skip where possible and edit later from your fundraiser dashboard.
5. If you are fundraising by yourself, please select “Individual”. If you are the leader of a fundraising team, you can select “Team” to create a Team Campaign. If you are looking to support an existing team, select “Support” and choose the available team fundraiser you wish to support.
 - a. [Optional Step for Teams](#): If you want to create a team for other fundraisers to join to support, you’ll have to register a team under the “Teams” tab from your dashboard.
6. Continue entering the required basic information for your fundraiser and livestream details. You can always skip where possible and edit later from your fundraiser dashboard.
7. Once ready, click “Create Campaign” to finalize and take you to your fundraiser dashboard.
8. [In your campaign’s dashboard](#), edit and finalize your campaign details. Once ready, make sure to click “Publish” to make your campaign publicly viewable.
9. In your published campaign dashboard, you will also be able to find your campaign links needed for sharing and driving donations to your fundraiser and charity stream. You can also [add incentives](#) and [create custom overlays](#) to use during your livestream through your fundraiser dashboard.
10. Now that its published, start spreading the word, share your livestream dates, and encourage your followers to donate to your fundraiser by communicating its impact and challenging them to help! Streaming across multiple dates to build momentum and raise awareness that you’re fundraising within your community.
 - a. Consider [adding the Tiltify Donations extension](#) to your Twitch channel to help make donating easier.

For more guidance on navigating the fundraiser dashboard and using the different tools available on Tiltify, [visit our comprehensive Red Cross Guide to Tiltify](#).

Need Help? Contact charitystream@redcross.org. You can also visit the official Red Cross Discord for help and resources via www.discord.gg/redcross or follow us on Twitter at [@RedCrossGaming](https://twitter.com/RedCrossGaming).



CROWDCONTROL COMPATIBLE GAMES FOR THE STREAM-A-THON



While you can play any game you want as part of the Rescue Royale Stream-a-thon, playing [CrowdControl](#) compatible games is a fantastic way to get your audience to donate and sabotage your gameplay as you fundraise! Available only for Twitch streamers, CrowdControl lets viewers take control of your game. **See below the full list of compatible games with their guides and [download the Twitch extension](#).**

- | | |
|---|--|
| <ul style="list-style-type: none">• Banjo Kazooie• Bedlamball• Castlevania• Castlevania III: Dracula's Curse• Castlevania: Symphony of the Night• Celeste• Cities: Skylines• Contra• Dark Souls• Dark Souls III• Deus Ex• Dr. Doggo: Enter the Glitch• Dragon Crystal• Duck Hunt• Fall Guys – Rescue Royale Tournament!• Gradius• Kirby Super Star• Megaman 2• Megaman 3• Megaman 4• Megaman 8• Megaman X• Minecraft• Pokemon Red/Blue• Punch-Out!• Raft• Rocksmith 2014 Remastered | <ul style="list-style-type: none">• SM/Z3R Crossover• Scholastic Animorphs• Sim City• Skyrim Special Edition• Sonic Adventure 2• Sonic Mania• Spelunky• Stardew Valley• Subnautica• Super Mario 64• Super Mario 64 Randomizer• Super Mario Bros. 2• Super Mario Bros. 3• Super Mario Kart• Super Mario RPG• Super Mario World• Super Mario World 2: Yoshi's Island• Super Metroid• Terraria• The Binding of Isaac: Afterbirth+• ToeJam & Earl• ToeJam & Earl: Back in the Groove!• Tony Hawk's Pro Skater 2• Zelda I: The Legend of Zelda• Zelda II: The Adventure of Link• Zelda: A Link to the Past Randomizer• Zelda: Breath of the Wild• Zelda: Orcarina of Time Randomizer• Zelda: The Wind Waker |
|---|--|

HELPFUL CHARITY STREAM TIPS AND TRICKS

- **Promote Your Live Stream.** Let your network know ahead of time so they can plan to tune it. Plan to stream across multiple days to help build momentum and grow awareness with your viewership!
- **Create Engaging Description.** Help viewers better understand your live stream content and why.
- **Rehearse ahead of time.** Be ready to explain why you're fundraising. Introduce yourself at the start of the video and why you're advocating for life-saving mission of the American Red Cross.
- **Be Friendly.** Smile and be energetic.
- **Repeat Your Message.** Periodically repeat what you are doing and why supporting the Red Cross Disaster Relief is important, specifically for people joining late to watch your Live Stream.
- **Get Support.** Have a friend or family member watch your live video so they can tell you if there are any issues with it, such as sound or quality issues.
- **Engage and Thank Your Viewers.** People viewing may comment on your video while you're recording so try to thank them in real time for their support and donations. You should also post after your last live video thanking your network of supporters for watching and engaging.
- **Use Incentives.** Tiltify provides a variety of tools for incentivizing donors, a great way to encourage your community to donate to your fundraiser campaigns. Tiltify provides a variety incentive tools for creating and tracking [Rewards](#), [Polls](#), and [Targets](#) (also known as Challenges). [CrowdControl](#) is also a fantastic way to incentivize your audience to give!
- **Live Stream During Peak Audience Hours.** According to Twitch statistics, 4 PM EST is the peak viewing time on the platform. However, if you are a regular streamer, you know when your audience is watching best so try to optimize your fundraiser around your own peak viewing hours.
- **Call to Action.** Throughout the video and at the end, repeat a "Call to Action" to get viewers to donate and share your video.
- **Abide by the Red Cross Social Media Guidelines and Best Practices.** Be a good social citizen and follow the provided [Red Cross Social Media Guidelines](#) and [Social Media Best Practices](#).
- **Don't Forget to Get Signed Consent.** If live streaming inside of someone's home or private property, make sure you obtain written permission.
- **Don't Pressure Volunteers.** Don't force people to be on your live stream if they don't want to be.
- **Don't Use Obscene Language or Gestures.** Always keep your video clean and family friendly.
- **Don't Use Pre-recorded Content.** Facebook can punish you for not using Live content.

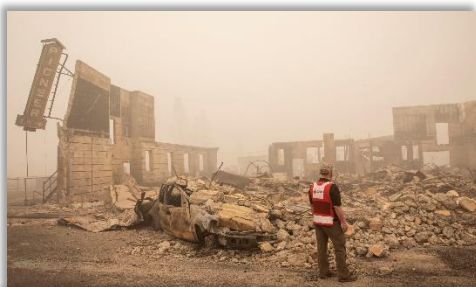
Need Help? Contact charitystream@redcross.org. You can also visit the official Red Cross Discord for help and resources via www.discord.gg/redcross or follow us on Twitter at [@RedCrossGaming](https://twitter.com/RedCrossGaming).



Disaster Relief Talking Points

To encourage others to join you in providing disaster relief, below are a few talking points to help:

- Your donations are key to saving lives, funding nearly 100% of Red Cross disaster relief efforts.
- With record temperatures, powerful storms, stronger hurricanes, devastating wildfires and other disasters and extreme weather events on the rise, so is the need to better prepare and respond to with relief for those impacted.
- The American Red Cross is ready to ensure we can provide comfort and support to anyone who needs help. This year, being ready for extreme weather events is even more critical after back-to-back seasons of record-breaking disasters.
- Support for disaster relief helps your local community and Red Cross prepare for, respond to, and recover from disasters big and small.
- Disaster relief includes providing food, shelter, relief supplies, emotional support, recovery planning and other assistance, as well as supporting the vehicles, warehouses and people that make this help possible.
- Families are still reeling from relentless disasters over the past year. In 2020, the Red Cross provided families with more nights in emergency lodgings than any other year over the past decade.
- Every eight minutes, the Red Cross helps someone affected by a disaster – the vast majority being home fires. Your disaster relief donation allows the delivery of critical help to people who need it – anytime, anywhere.
- The Red Cross works closely with local partners to create plans and coordinate recovery services to ensure people get the help they need to get back on their feet. After some disasters, the Red Cross may also provide grants to local community organizations for specialized activities, such as repairing homes or installing solar panels.
- Red Cross caseworkers may connect one-on-one with people to create individual recovery plans, navigate paperwork and locate help from other organizations.
- The Red Cross may also provide financial support directly to people who need extra help. Financial assistance from the Red Cross can help pay for a deposit on a new apartment, replace lost clothing or other belongings, cover transportation expenses or any other urgent need.



A Red Cross volunteer looks over damage from the Dixie Fire in Greenville, CA, a small town that was devastated by the fire. Many of the evacuated residents found shelter with the Red Cross.



A Red cross volunteer checks in on Cassandra and her baby Chaya, 2 months old, at an American Red Cross shelter in Alexandria, LA in the wake of Hurricane Laura.



The American Red Cross does damage assessment from a tornado in Onalaska, TX. A powerful tornado damaged hundreds of homes in the community earlier in April 2020.

RESOURCES: [Quick Start Tiltify Toolkit](#) | [Rescue Royale Tournament Sign Up](#) | [Streamlabs OBS Theme](#)
[CrowdControl Guide](#) | [Setup](#) | [Red Cross Disaster Relief](#) | [Compatible Games - CrowdControl](#)