



American Red Cross
of Idaho and Montana

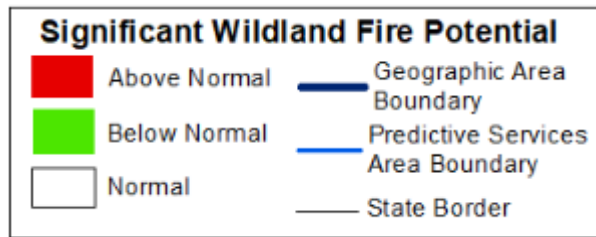


For Your Situational Awareness

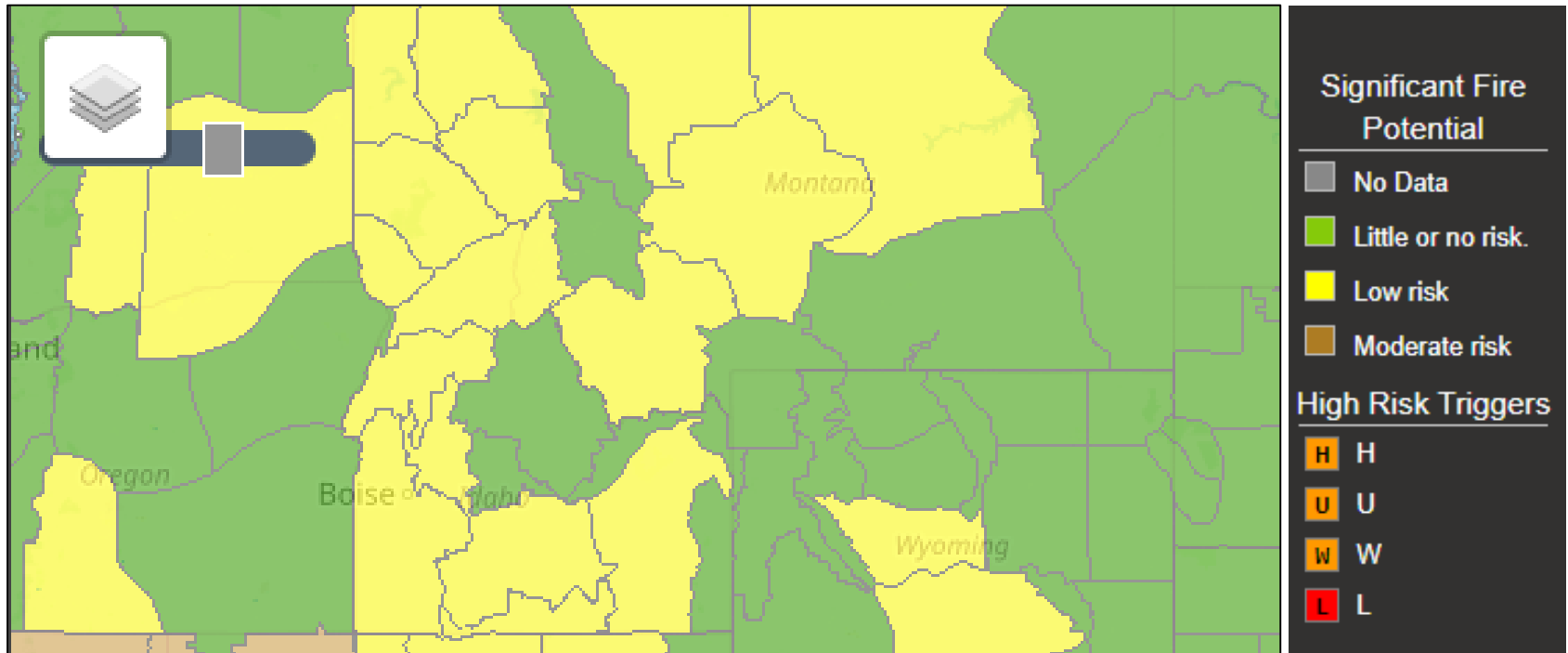
Idaho and Montana Situation Brief

July 11 – July 17, 2019

Summer Fire Outlook



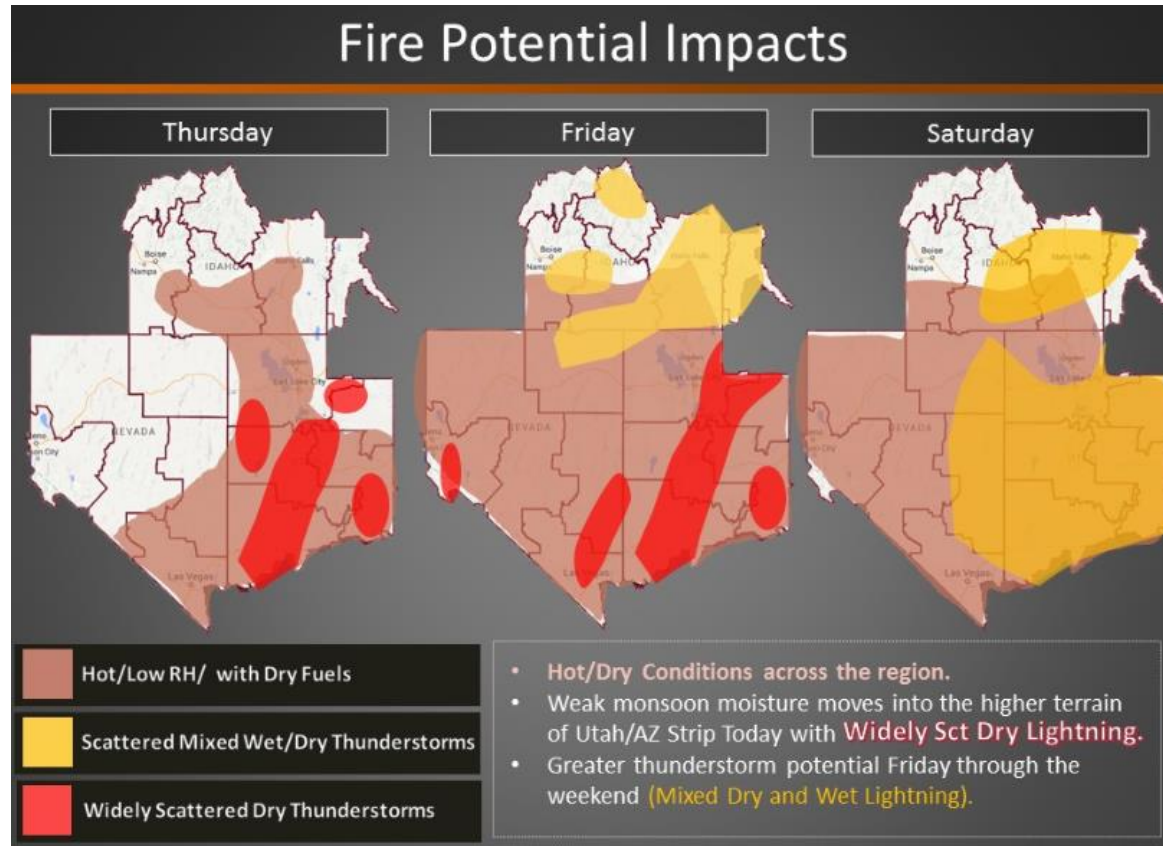
Weekly Regional Fire Risk



This graphic represents peak fire risk for the next seven days. Risk peaks in the latter part of the week, beginning Monday.

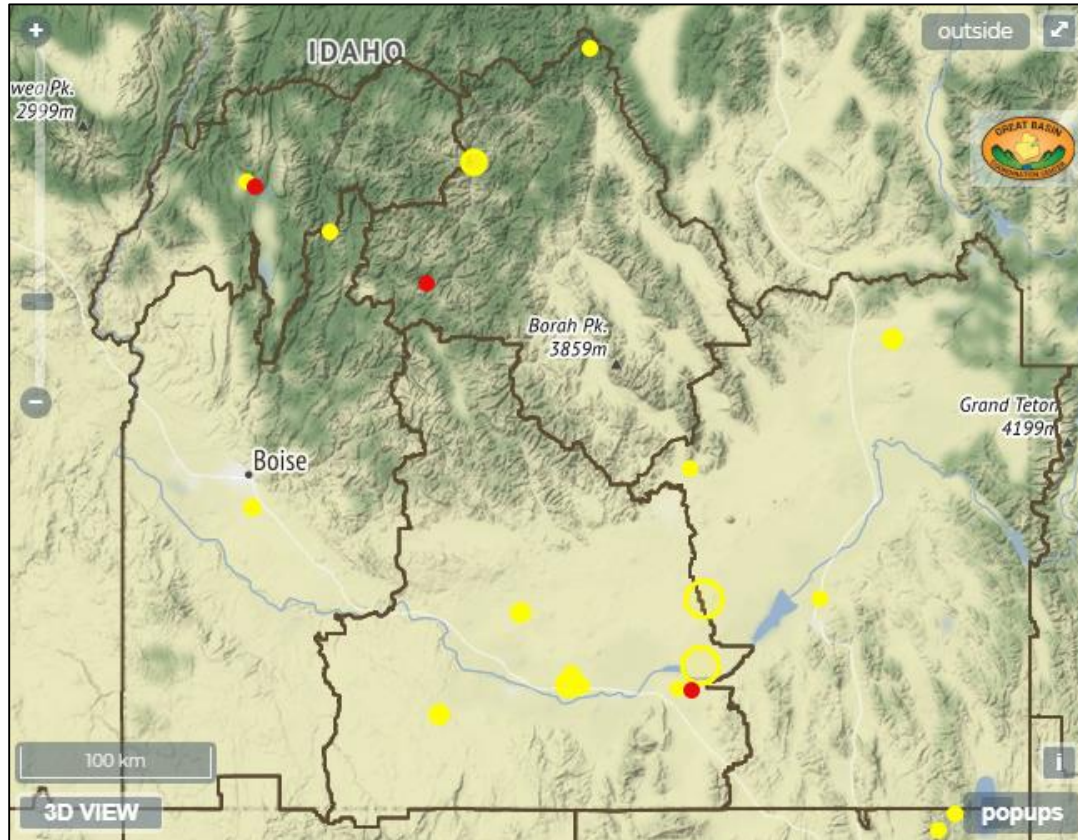
Wildland fire weather is as only reliable as the humans that recreate in them.

Southern Idaho Short Term Fire Outlook



*Please note Southern Idaho is the top section of the geographical area. Nevada and Utah are the lower section.

Current Idaho Fire Activity



- Current as of distribution
- Most recent fires have been caused by lightening from afternoon thunderstorms.

-  New Fire <30 Hours
-  Ongoing Fire <10 Days

Current Montana Fire Activity

Legend

Active Incidents

Large WF

- Under 10k Acres
- 10k to 100k Acres
- Over 100k Acres

WF Unknown Size

-

Emerging WF < 24 hours

- Emerging WF < 24 h...

Emerging WF > 24 hours

- Emerging WF > 24 h...

Satellite Fire Detections

12 Hour MODIS

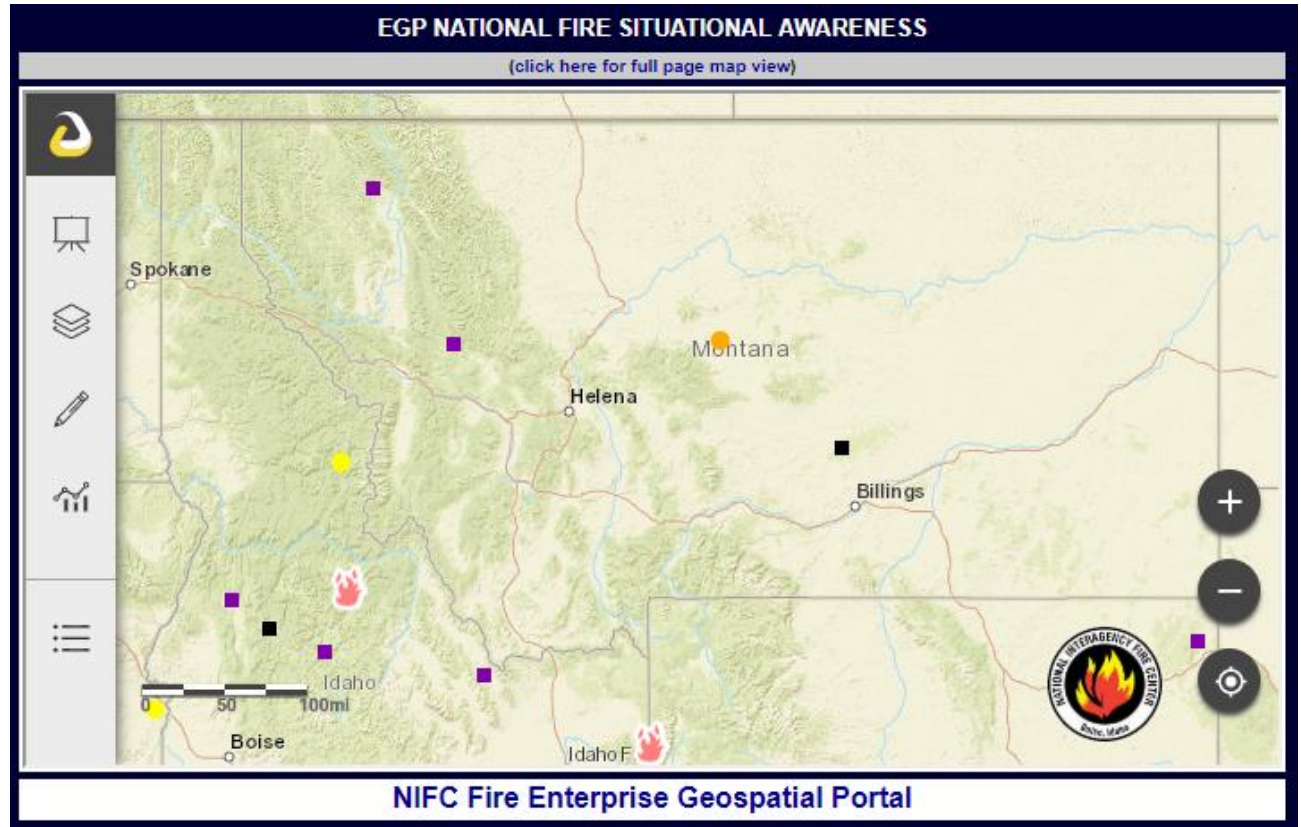
- 0-12 Hours

24 Hour MODIS

- 12-24 Hours

48 Hour MODIS

- 24-48 Hours



- Current as of distribution

Wildland fire weather is as only reliable as the humans that recreate in them.