



**American Red Cross**  
of Idaho and Montana

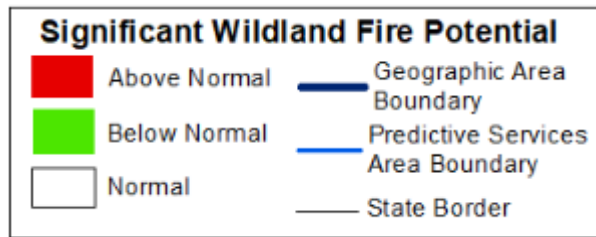


***For Your Situational Awareness***

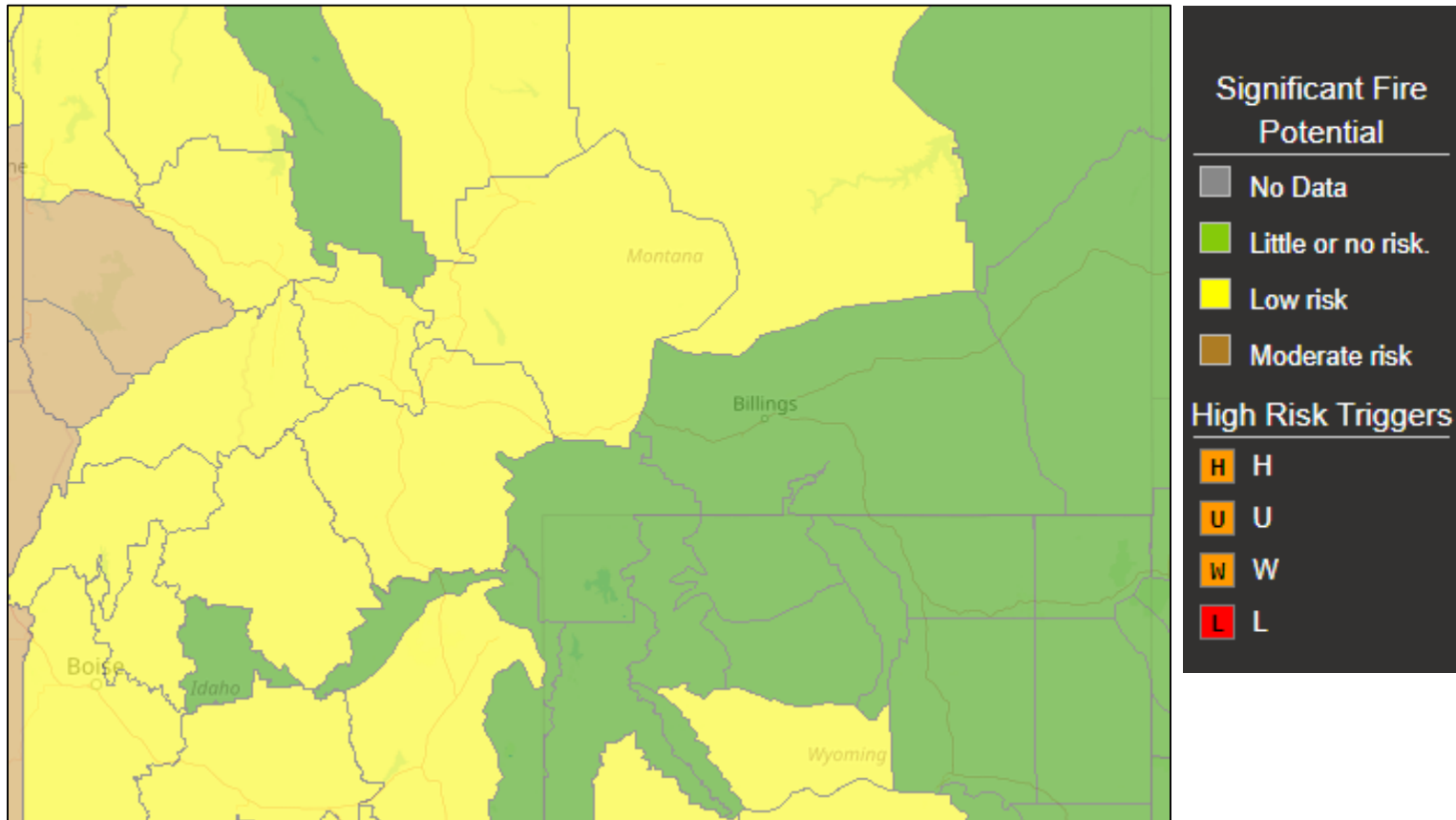
***Idaho and Montana Situation Brief***

July 17 – July 24, 2019

# Summer Fire Outlook



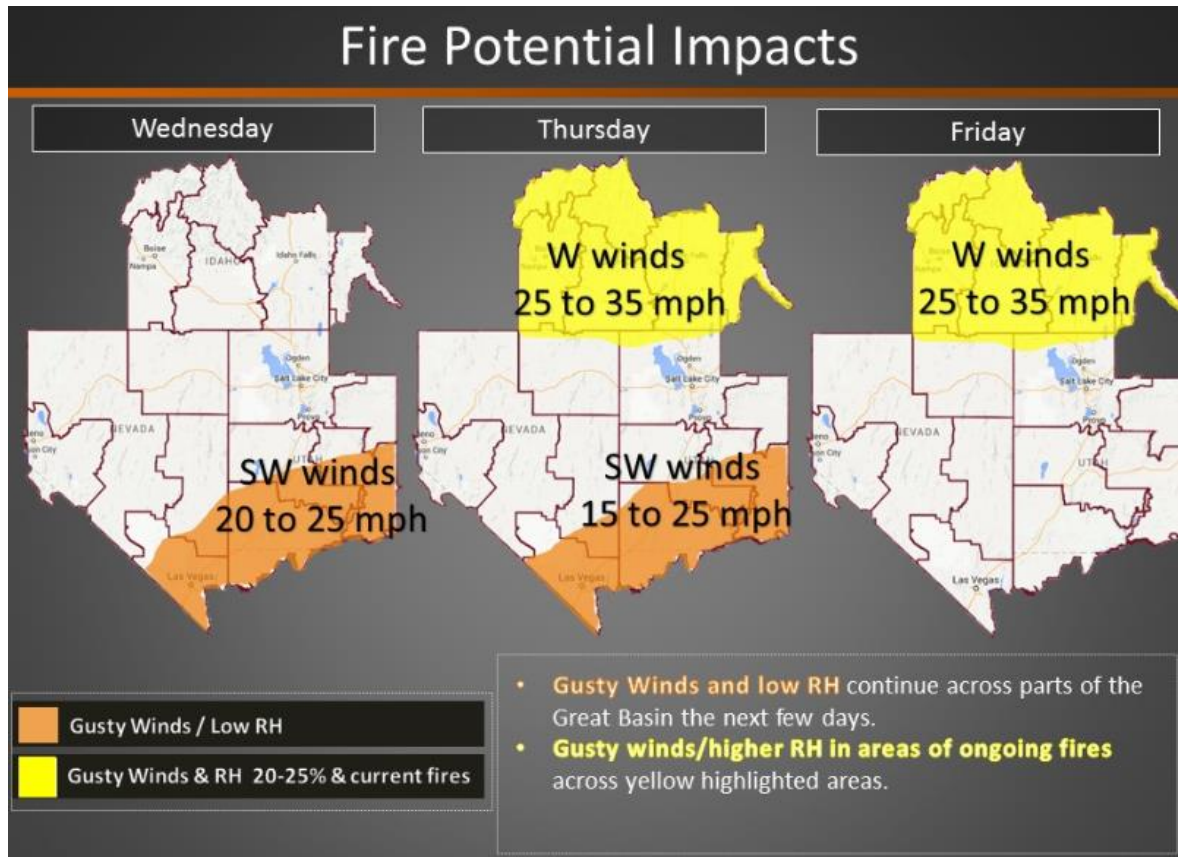
# Weekly Regional Fire Risk



This graphic represents peak fire risk for the next seven days. Risk peaks in the latter part of the week, beginning Monday.

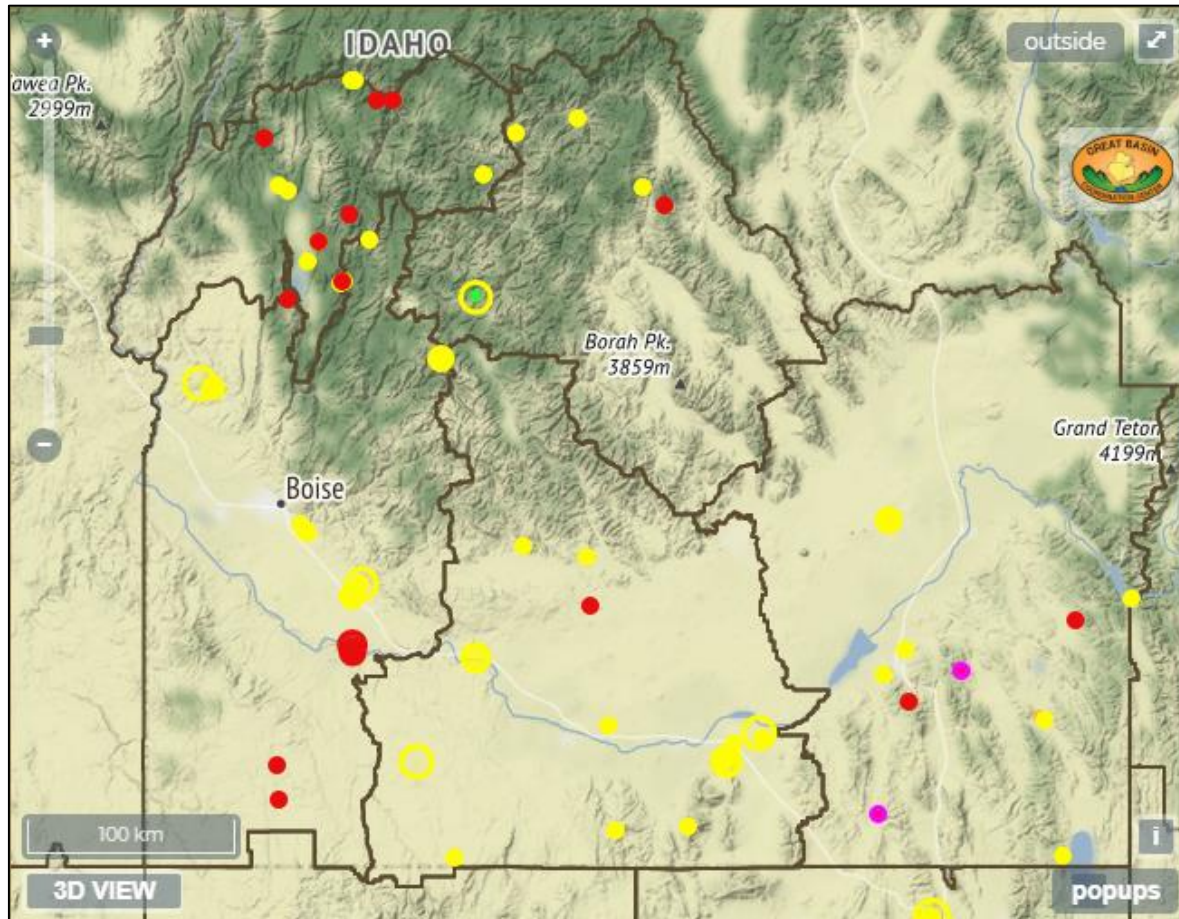
\*Wildland fire weather is as only reliable as the humans that recreate in them.\*

# Southern Idaho Short Term Fire Outlook



\*Please note Southern Idaho is the top section of the geographical area. Nevada and Utah are the lower section.

# Current Idaho Fire Activity



Current as of distribution  
Most recent fires have been caused by lightning from afternoon thunderstorms.

- New Fire <30 Hours
- Ongoing Fire <10 Days
- Prescribed Fire <10 Days



# Current Montana Fire Activity

**Legend**

Active Incidents

**Large WF**

- Under 10k Acres
- Over 100k Acres
- 10k to 100k Acres

**WF Unknown Size**

- 

**Emerging WF < 24 hours**

- Emerging WF < 24 h...

**Emerging WF > 24 hours**

- Emerging WF > 24 h...

**Satellite Fire Detections**

**12 Hour MODIS**

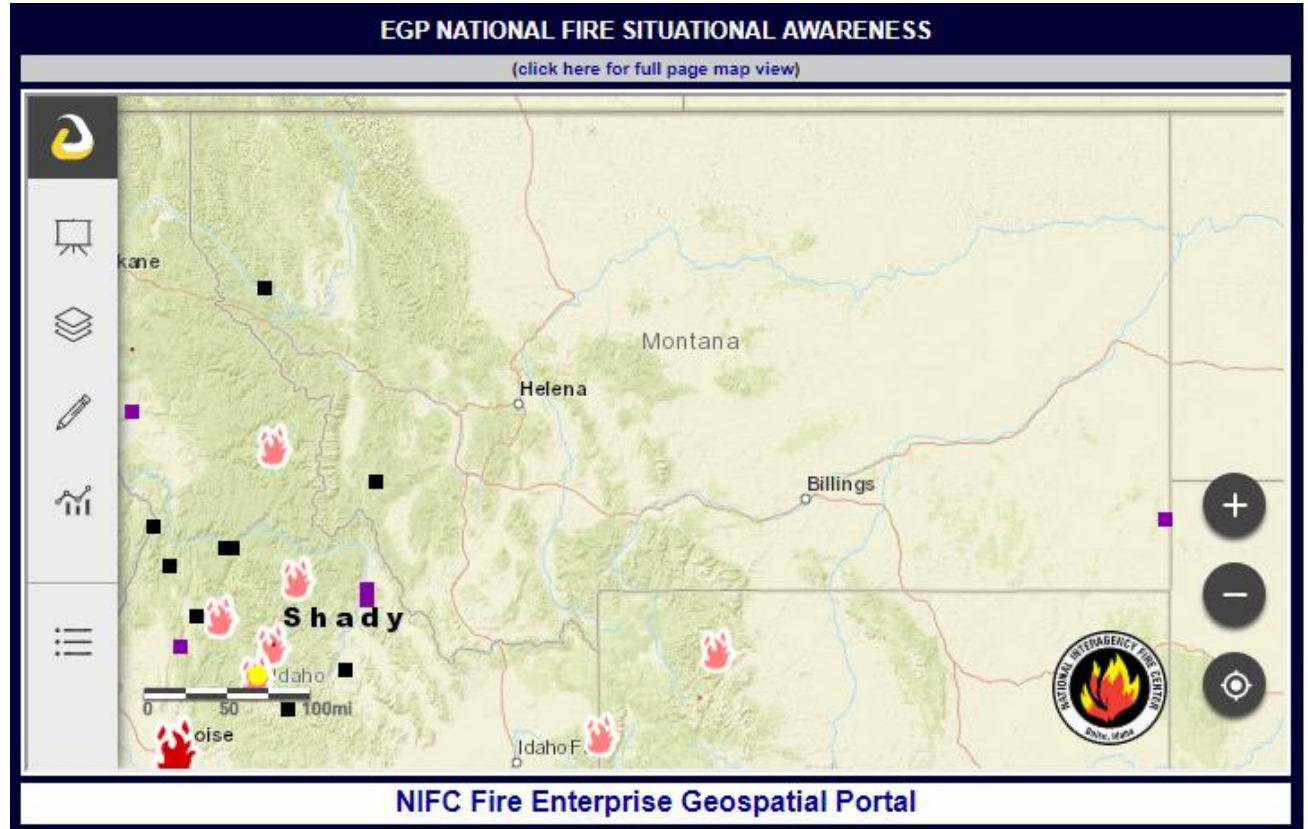
- 0-12 Hours

**24 Hour MODIS**

- 12-24 Hours

**48 Hour MODIS**

- 24-48 Hours



- Current as of distribution
- Please note most of the fires on this graphic are in Idaho

\*Wildland fire weather is as only reliable as the humans that recreate in them.\*