

# Widespread Devastation

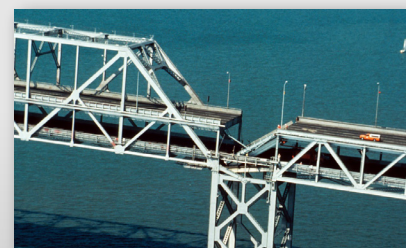
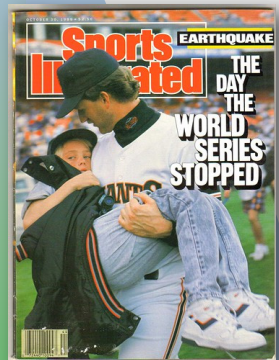
## An overview of the Loma Prieta earthquake's impact on the Bay Area

### The Nation Watched

The earthquake occurred just before the start of Game 3 of the World Series

The quake interrupted the live telecast from San Francisco's Candlestick Park, as the nation watched the earthquake in real time

Loma Prieta is sometimes referred to as the "World Series earthquake"

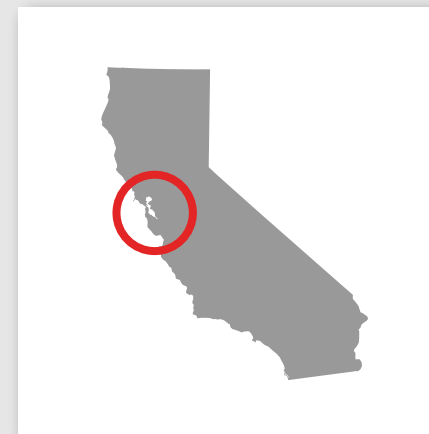


### San Francisco-Oakland Bay Bridge

One person died

A 250-ton section of the upper deck fell onto the lower deck

The Oakland side of the bridge shifted 7 inches to the east and sheared the bolts off another section, triggering the collapse



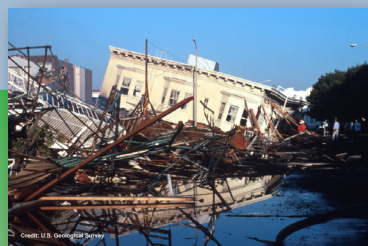
### San Francisco: Marina District

Four people died

11 buildings were destroyed, another 63 structures deemed too damaged to inhabit

Because the area had been built atop a landfill, liquefaction occurred, which is when saturated or partially-saturated soil loses its strength in response to stressors like an earthquake

A natural gas main ruptured, causing a major structure fire; the fire department relied on the help of civilians to help put it out



### Interstate 880/Cypress Structure

42 people died, many more were injured

Support columns failed on a 1.25-mile stretch of the double-decker highway, causing the upper deck to crash down onto the lower deck

The highway was constructed atop filled marshland, and fell victim to liquefaction during the quake

I-880 was rebuilt in 2001, but moved further west with improved safety and reinforcement construction



San Francisco

Oakland

San Jose

Santa Cruz

### The Earthquake

Oct. 17, 1989 at 5:04 p.m. PST. The ground shook for 15 seconds

6.9 Magnitude event, along the San Andreas Fault system approx. 8 miles NNE of Santa Cruz in the Santa Cruz mountains near Loma Prieta peak

66 people died, 2,400 were injured, and more than 10,000 homes were left uninhabitable

The quake caused an estimated \$6 billion in damage, equivalent to \$13 billion today



### Santa Cruz and Monterey Counties

Six people died

40 buildings collapsed, another 31 were damaged enough to warrant demolition

Liquefaction and landslides damaged highways; twin bridges over Struve Slough in Watsonville were heavily damaged



American Red Cross

