

# Philadelphia Board of Directors 2022-2023

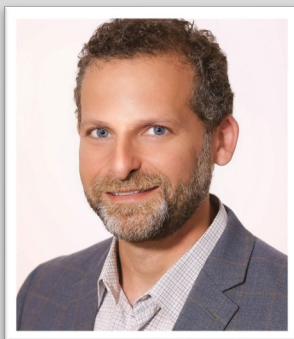


**American Red Cross**  
Southeastern Pennsylvania

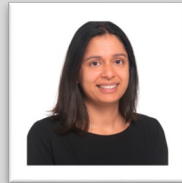
## Board Leadership



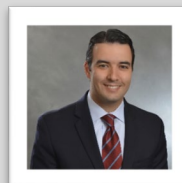
**Guy Triano**  
Regional CEO, American Red Cross  
Red Cross Southeastern PA



**Lawrence H. Pockers**  
Board Chairperson  
Partner, DuaneMorris LLP



**Sophia Ahmad**  
Board Vice-Chairperson  
Executive VP,  
Chief Marketing Officer  
Xfinity Customer Services



**Robert Poliseno**  
Board Vice-Chairperson  
COO, North America  
Field Operations  
CHUBB

## Board of Directors - Membership



**Scott Cohen**  
Managing Director & Partner  
Quattro



**Ron Davis**  
Director of Diversity &  
Community Development  
Parx Casino



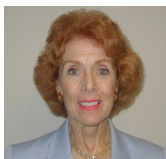
**Julie Copeland**  
CEO  
Arbill



**Tine Hansen-Turton**  
President & CEO  
Woods Services



**M. Walter D'Alessio\*\***  
Vice Chairman  
NorthMarq Capital



**Barbara D. Hauptfuhrer**  
Community Partner



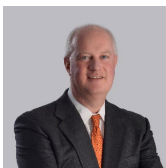
**Dina Daniele**  
Senior Vice President-  
Marketing Manager  
Graham Company



**Thomas D. Hays, III, CTP \*\***  
T.D. Hays, LLC



**Drew T. Davis, PE**  
Director of Utilities  
Infrastructure Projects  
Exelon



**Eric G. Helt**  
Vice President,  
Infrastructure Projects  
Exelon Utilities

## Philadelphia Board (continued)



**Donald E. Lewis**  
President,  
Professional Hygiene  
Essity



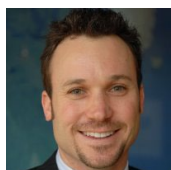
**Harry J. McHugh\*\***  
Cultural Ambassador  
Wawa Inc.



**Dan Morris**  
Partner  
Blank Rome



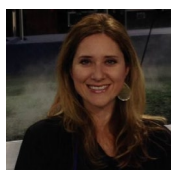
**A. Brock Myers**  
Vice President/GM  
Allan Myers



**John New**  
CEO & Co-Founder  
WorkMerk



**Patrick Pasquariello**  
CEO  
P. Agnes



**Stefanie Perry**  
SVP, Talent Management  
Amerisource Bergen



**David Poindexter**  
Community Partner



**Charles W. Quann**  
Senior Pastor  
Bethlehem Baptist Church



**Linda Rosanio**  
Chief Operating Officer  
VSBLTY



**Matthew J. Rosenberg**  
President & CEO  
Rosenberg & Parker



**Phil Sampona**  
Sr. Manager, Strategic  
Procurement  
Comcast



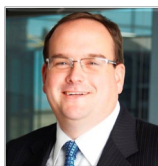
**Brian Schaller**  
Senior Vice President  
Real Estate & Fuel  
Wawa Inc.



**Adam K. Thiel**  
Fire Commissioner  
City of Philadelphia



**Karen Totland \*\***  
Vice President &  
Chief Sustainability Officer,  
FMC Corporation



**David Webb \*\***  
Senior Partner &  
Managing Director,  
Philadelphia  
Boston Consulting Group



**Kenneth Wong**  
President  
Cig Asia, Ltd

**\*\* Emeritus Chair**