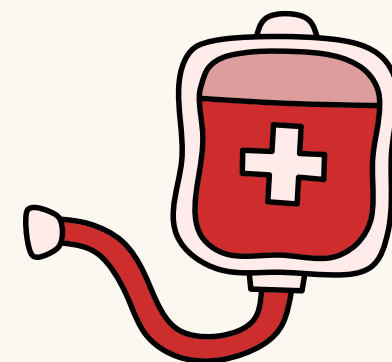




January Crash Course Call

Blood & Training Services



Introduction

About Me



Natalie Kim
Crash Course Call Lead

Icebreaker Question:
What is your biggest hot-take?

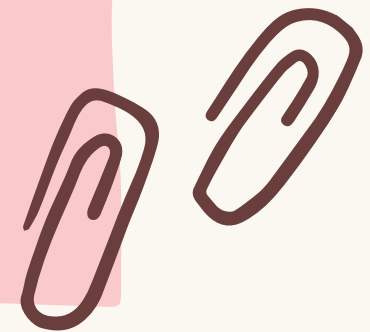
hello





What are Crash Course Calls?

Discussing Red Cross related topics such as lines of service, history, etc. and connecting youth to opportunities related to the discussed topics. Join the CCCs to learn more about the Red Cross and youth opportunities to engage in!





Agenda

Guest Speaker Intro

DEI & Blood Donations

Red Cross Opportunities

Wrap-Up Activity



Introduction

Sanjana Velu



Sanjana Velu
Diversity, Equity, Inclusion Lead

- School: Second Year @ Penn State University
- Major: Premedicine
- Minor: Diversity and Inclusion in Health and Human Development
- Hobbies: baking, reading, traveling, trying new foods
- Email: sanjana.velu@redcross.org



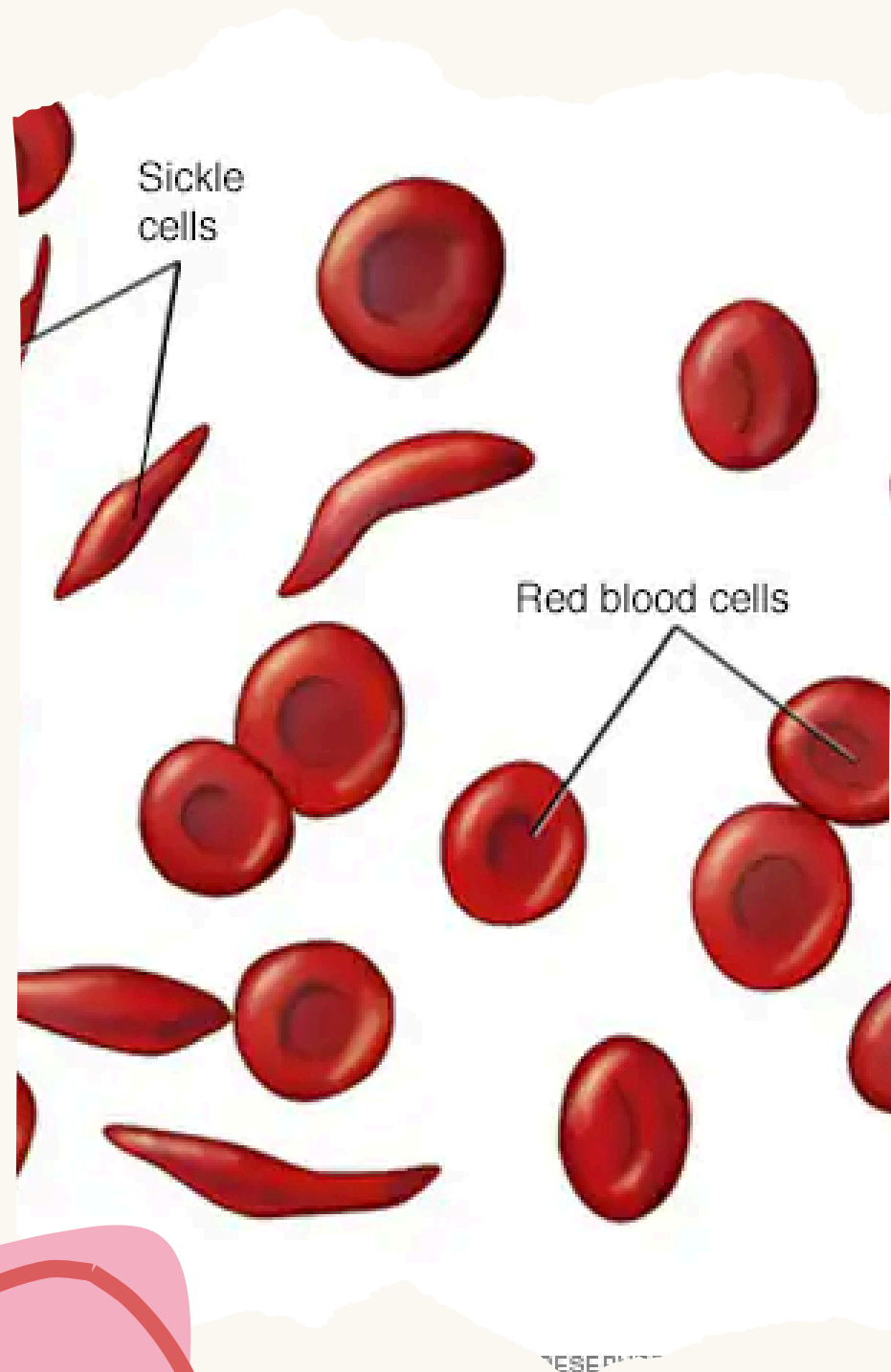
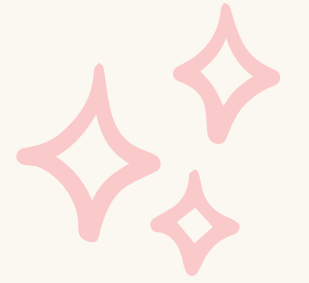


Blood Services:

Sickle Cell



What is Sickle Cell Disease?



- Red blood disorder
- Causes acute anemia, tissue/organ damage, terrible pain, strokes
- Abnormal red blood cells are stiff, distorted, and block vessels
- No cure
- Blood transfusions from healthy people help



Sickle Cell Statistics

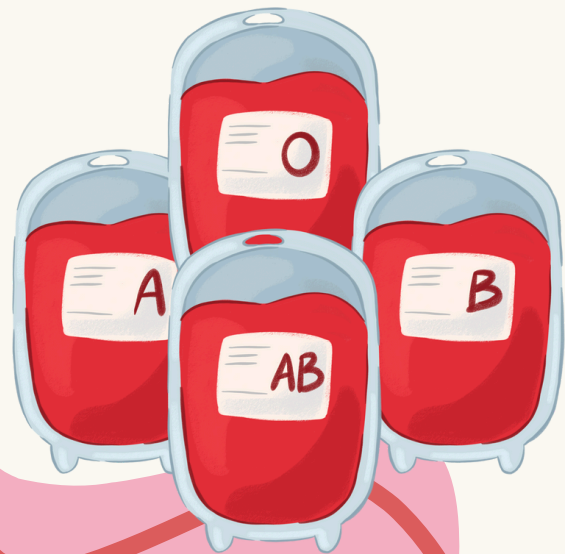


- >100,000 people in US affected
- 1 of 365 black or African American births affected
- Up to 100 units of blood needed per patient per year
- Blood donations alleviate symptoms and save lives



Blood Donor Diversity

- Blood from same race or similar ethnicity ensures best transfusion results
- Scarcity of black or African American donors (especially for those with sickle cell)
- Diversifying blood donor pool is crucial for this reason





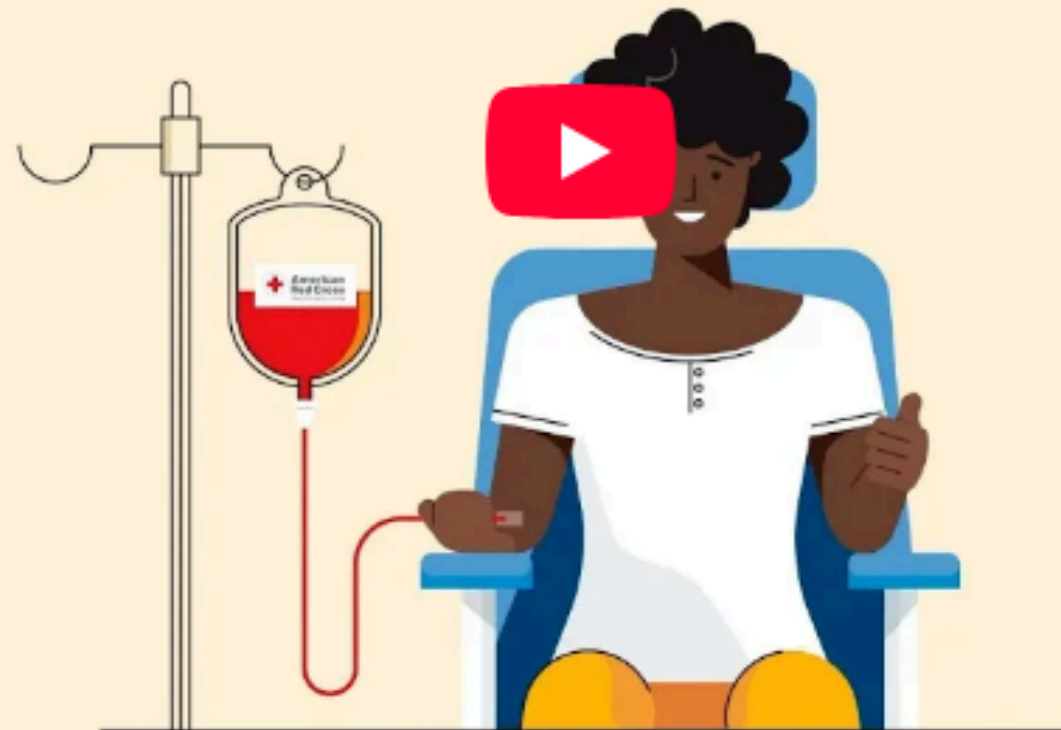
How to Donate Blood to Help Patients With Sickle Cell Disease



Share

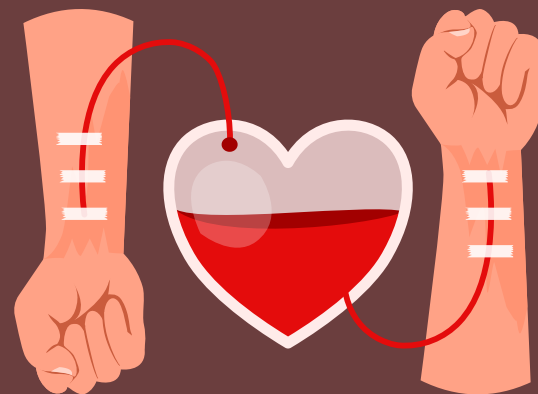
From a channel with a health professional
licensed in the US

How Blood Transfusions Help Patients with Sickle Cell Disease



Watch on  YouTube





Blood Services: LGBTQ+ Donors



Early Restrictions

- Blood donor eligibility restricted by sexual orientation for many years
- MSM at increased risk for HIV (transmissible via infected blood)
- Dates back to early days of AIDS epidemic, when blood donations were unable to be screened properly



Recent Advancements

- Recent advances in...
 - Testing methods
 - Blood processing
 - General public health
 - Disease transmission
- Restriction remained for years, worsening blood shortage and increasing stigma around LGBTQ+ donors



The Change

- Significant data collection, assessment and advocacy
- Worked as part of the FDA-funded ADVANCE Study
- Contributed to FDA approval of individual risk-based assessment and elimination of sexual orientation questions
- Will continue to provide data to the FDA in support of further progress



A yellow rectangular sign with rounded corners and a thin pink border. It is suspended by two pink lines from a central point at the top. The text on the sign is in a bold, dark brown, rounded font with a white outline.

Training Services: Drowning



Dangers of Drowning



- Drowning is leading cause of death for children
- Disproportionately higher rate in African American, Native American, Latino communities



Evidence-Based Solutions

- Formed the Aquatics Centennial Campaign
 - Helps reduce drownings in communities with numbers above national average
- Help provide swim lessons, junior lifeguard, lifeguard and swim instructor training, and water safety and CPR training for minimal cost
- Educate, promote and support swimming, water safety and healthy aquatics activities for vulnerable populations



The graphic features a central yellow rectangular sign with rounded corners and a black border, hanging from a black cord with a yellow dot at the top. The sign contains the text "Community Health: Information" in a bold, white, rounded font with a pink outline. The background is a solid pink color. In the top left, there are two yellow paperclip icons. In the top right, there is a large, light pink abstract shape. In the bottom left, there is a yellow abstract shape with a white outline. In the bottom right, there are three pink diamond-shaped sparkles and a white circle with a red cross inside.

Community Health: Information



Measurements & Data

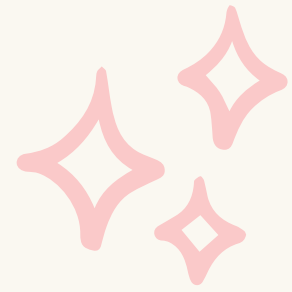
- Provision of valuable health information to blood donors
- Easily accessible via online platforms and mobile apps
- Promotes the health of donors and encourages diversity in donor pool



Youth

Opportunities





Youth Opportunities

Blood Donors Ambassadors

- At least 16 and up
- Email will come back in 1 to 2 weeks
- 1 Day of training

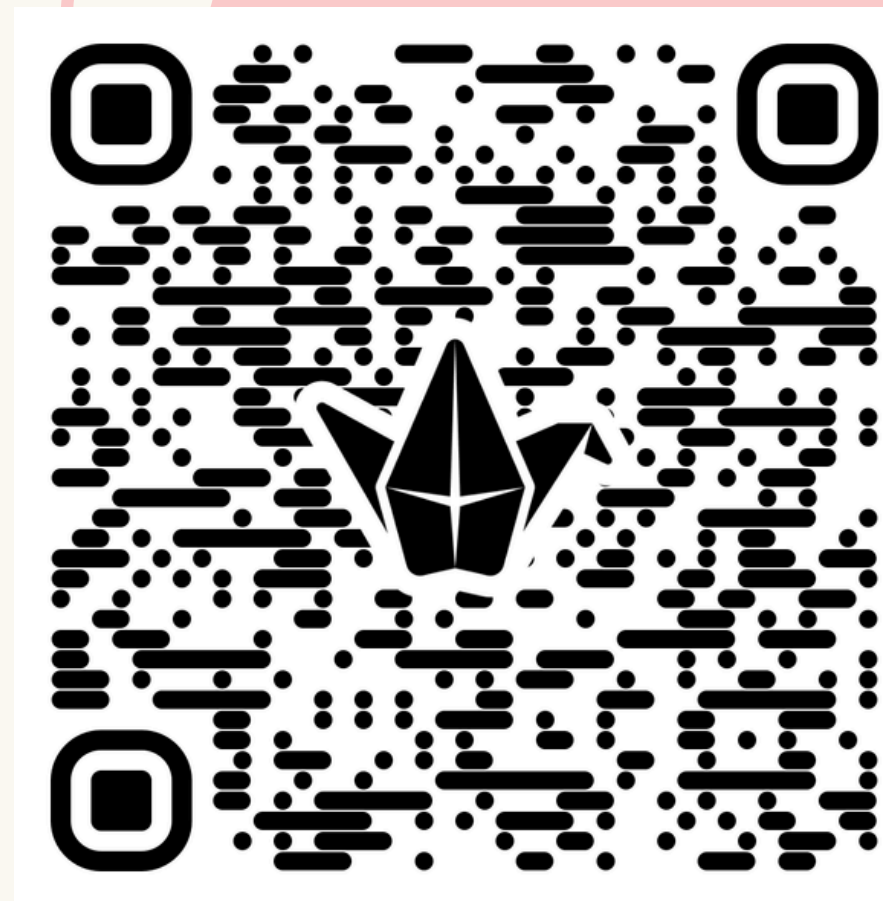
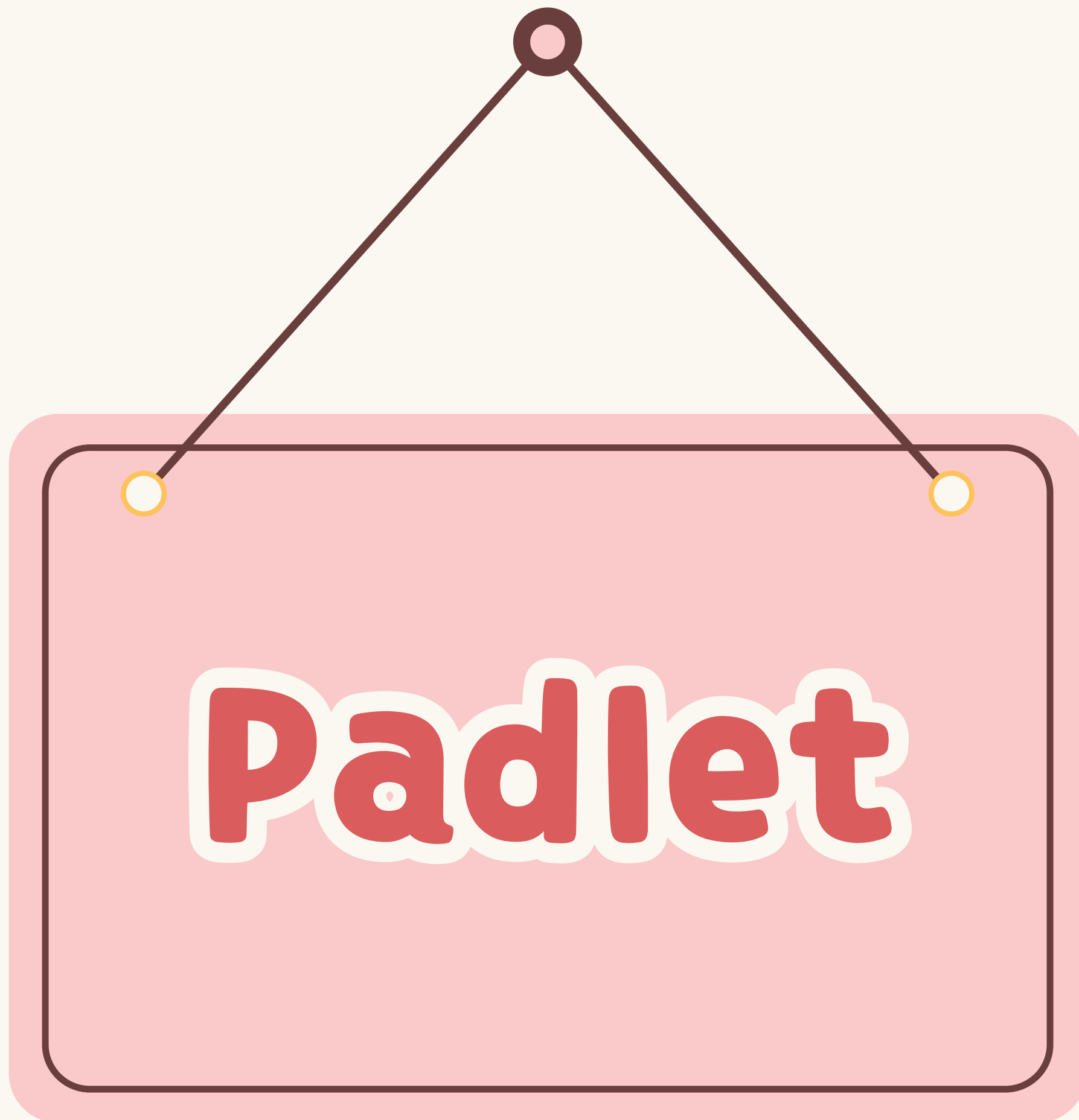
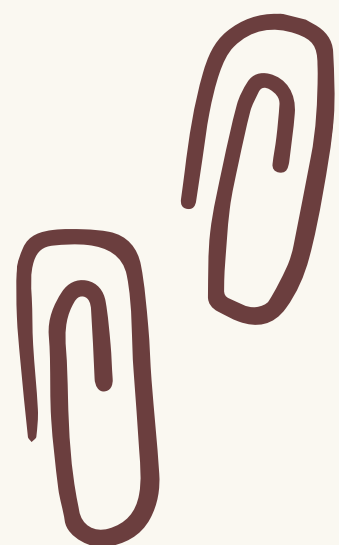
Leaders Save Lives

- Runs while school is out of session
- plan and host a blood drive
- you, your friends, and your advisor set up everything

Donate Blood!

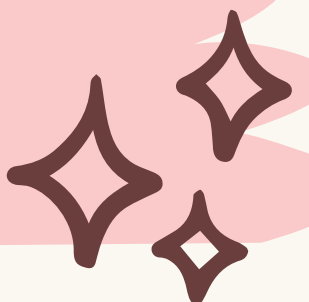
- 1) Go to [redcross.org](https://www.redcross.org)
- 2) At the top bar, hover over the “Give Blood” section and click “Find a Blood . Drive” (it should be at the top of the list)
- 3) Enter in your zip code and find blood drives by date or by distance!







 **Thank**

You 

Questions?

