



## Automated External Defibrillator (AED) Training Device

### Operating and Maintenance Instructions

**WARNING:** Before operating this AED training device please read all of the directions, including warning statements carefully.

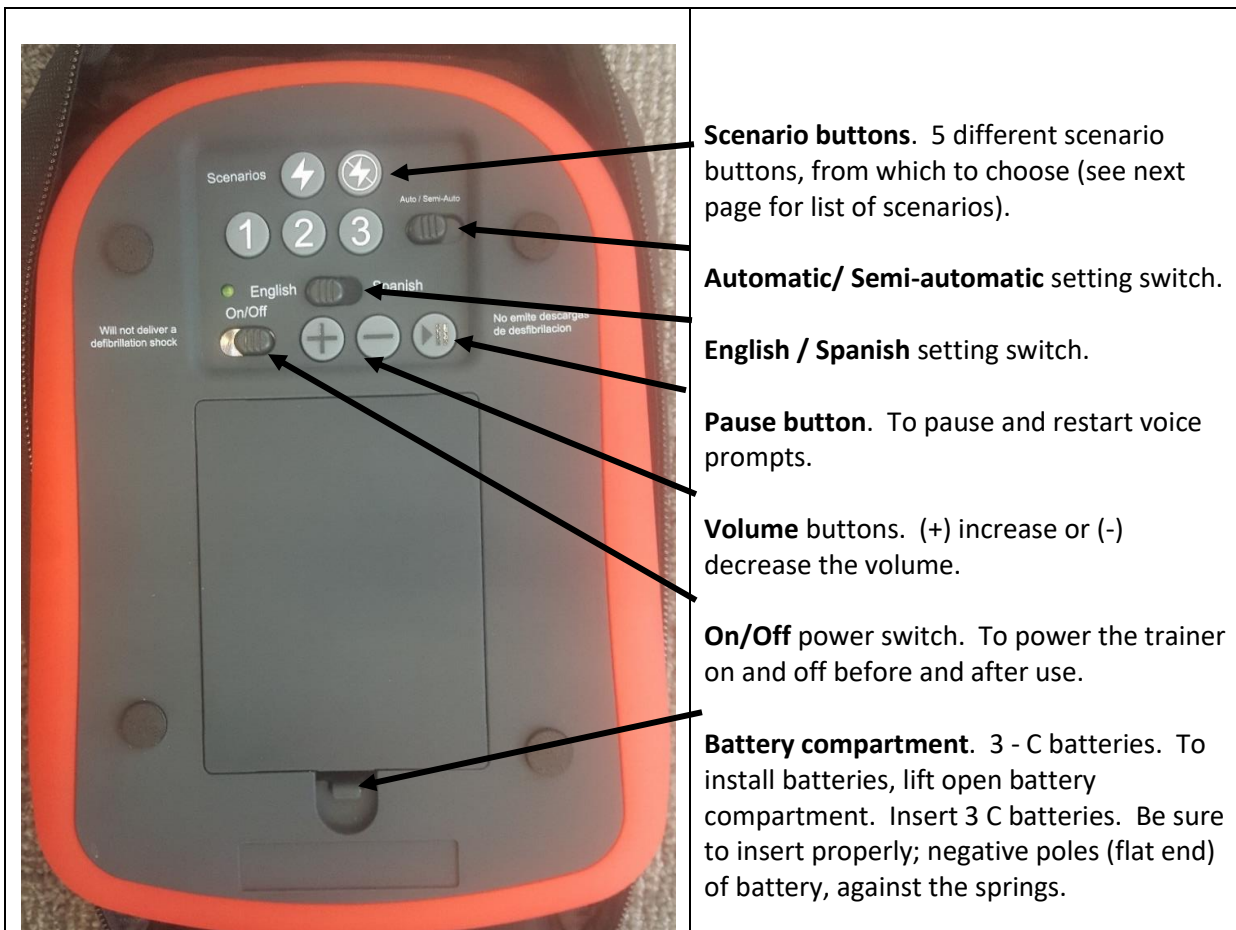
**WARNING:** Do not store this training device with first aid kits or near any live AED.

**WARNING:** AED Training Device is NOT for patient use. Will NOT deliver a defibrillation shock.

**WARNING:** These AED training pads are not capable of delivering a shock.

**WARNING:** The AED training pads should never be attached to a human.

**WARNING:** Turn the “On/Off” power switch (on the back of AED trainer) to “OFF”, when not in use. Otherwise batteries may drain or damage the training device.

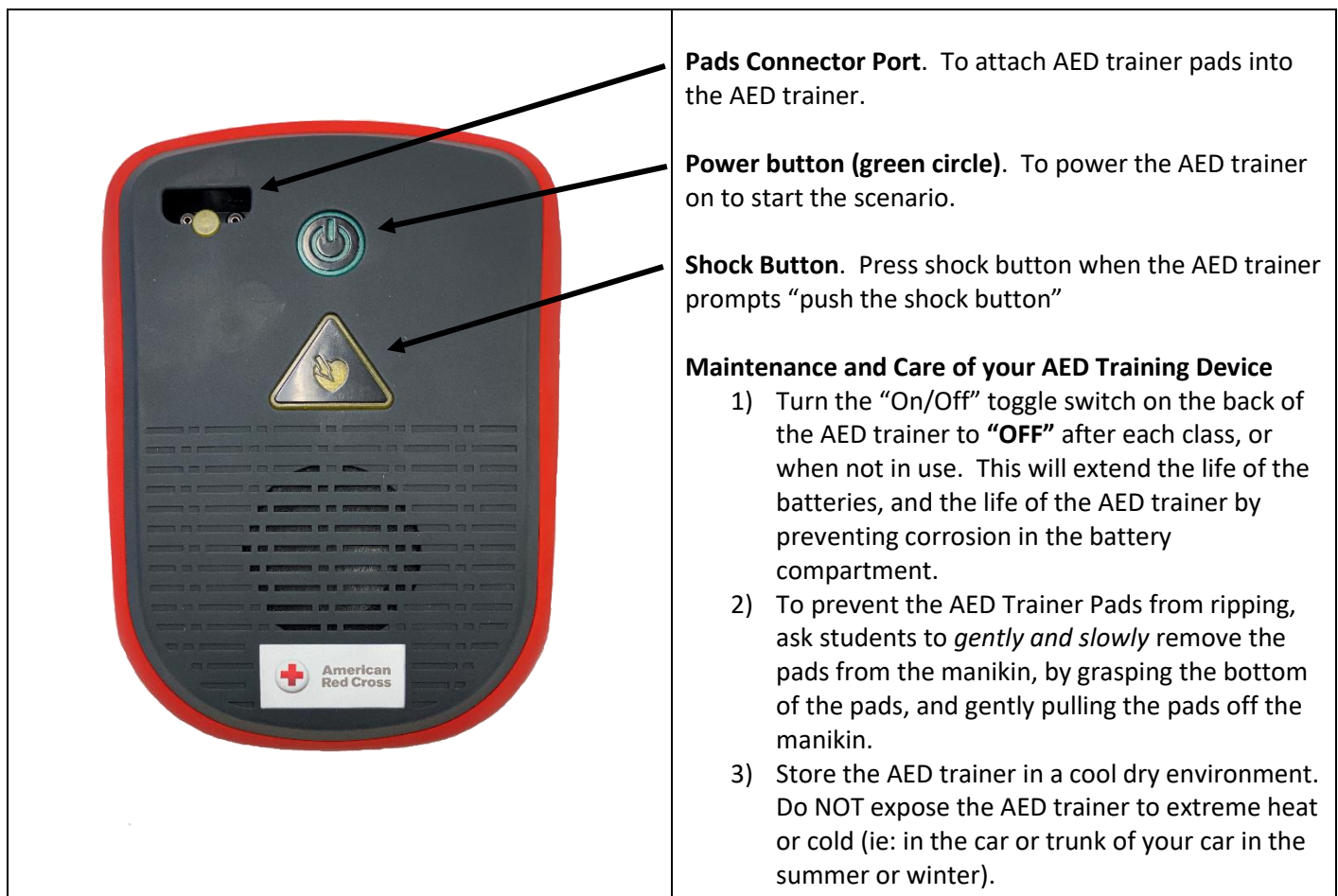


## Directions for Instructors before class starts:


- 1) Make sure batteries are properly installed in the battery compartment.
- 2) Turn **On**, the *On/Off* power switch on back of device (shown above).
- 3) Select one of the 5 Scenario buttons. For list of scenarios see below.
- 4) Select 'Auto' or 'Semi-Auto' ('Auto' setting, the AED trainer automatically administers the 'shock' if needed during the scenario. 'Semi-Auto' setting will prompt the student to "*push the shock button*" if shock is needed).
- 5) AED trainer is now ready for class. Instruct students to push the power button (green circle) on the front of the AED trainer to turn on the AED trainer and begin the AED trainer scenario.

## Directions for operating American Red Cross AED trainer during class:


- 1) Make sure the "On/Off" power switch, on the back of the trainer is switched to the "On" position.
- 2) Push the power button (green circle) to turn on AED trainer.
- 3) Follow the voice prompts of the AED trainer to attach pads and plug in connector.
- 4) Push the shock button, if prompted by the AED trainer.
- 5) Begin CPR if prompted by the AED trainer.



## 5 Scenario Buttons (on back of AED trainer):

 : Shock, CPR

Scenario 1: Shock, CPR, Shock, CPR

 : No shock, CPR, Shock, CPR

Scenario 2: Shock, CPR, No Shock, CPR

Scenario 3: Shock, CPR, No Shock, CPR, No Shock, CPR