



American Red Cross
Training Services

Premium AED Trainer

Powered by





American Red Cross Premium AED Trainer

Powered by PRESTAN



Model: PP-AEDUT-101-ARC

The Red Cross AED Premium Trainer is preprogrammed with English/Spanish language, one set of adult/child training pads (pre-installed), one set of extra connector pins and a nylon carrying case. Requires 3 'C' Batteries (*Not Included*)



START HERE

- Use this instruction sheet as a reference for the Red Cross Premium AED Trainer and accessories.
- **Warning:** The Red Cross Premium AED Trainer is intended for training purposes only. It is **NOT** an Automated External Defibrillator (AED) and will not deliver a shock. To avoid confusion, it should **NEVER** be kept in the same area with AEDs.



FEATURES

- High performance training pads
 - Clear anatomical placement graphics
 - Long-life adhesive
 - Adheres well to all manikins with no messy residue left behind
 - Unique pad connector with locking connector pin
- Pad Sensing System
 - Pads are pre-connected
 - Pads include on-manikin detection
 - Plugging in connector NOT required
 - Works on any make or model manikin
- Protective & reusable pad tray
- Adult / Child selection button
- Bright illuminated shock button
 - Flashes when shock is advised
- 3-year limited warranty
- On/Off button with lighted indicator and program pause option
- Five training scenarios
- Clear & calm voice prompts
- Chest compression-rate metronome
 - Metronome can be turned on or off
 - Metronome audible count reminders at 10, 20 and 30 compressions
- Automatic OR semi-automatic shock delivery
- Programming option to either include or not include time for breaths after compression cycle
- Long battery life
 - Low battery voice prompt warning
 - Automatic shut off extends battery life
- Water & splash-resistant

ADULT/CHILD TRAINING PADS

- Pad cords are pre-connected to the AED Trainer
- Pad Sensing System automatically lets the unit know when the pads have been connected to a manikin
- Pads last for 100+ uses
- Unique pad replacement (see assembly section)
- Pads are stored on a convenient double-sided Pad Tray



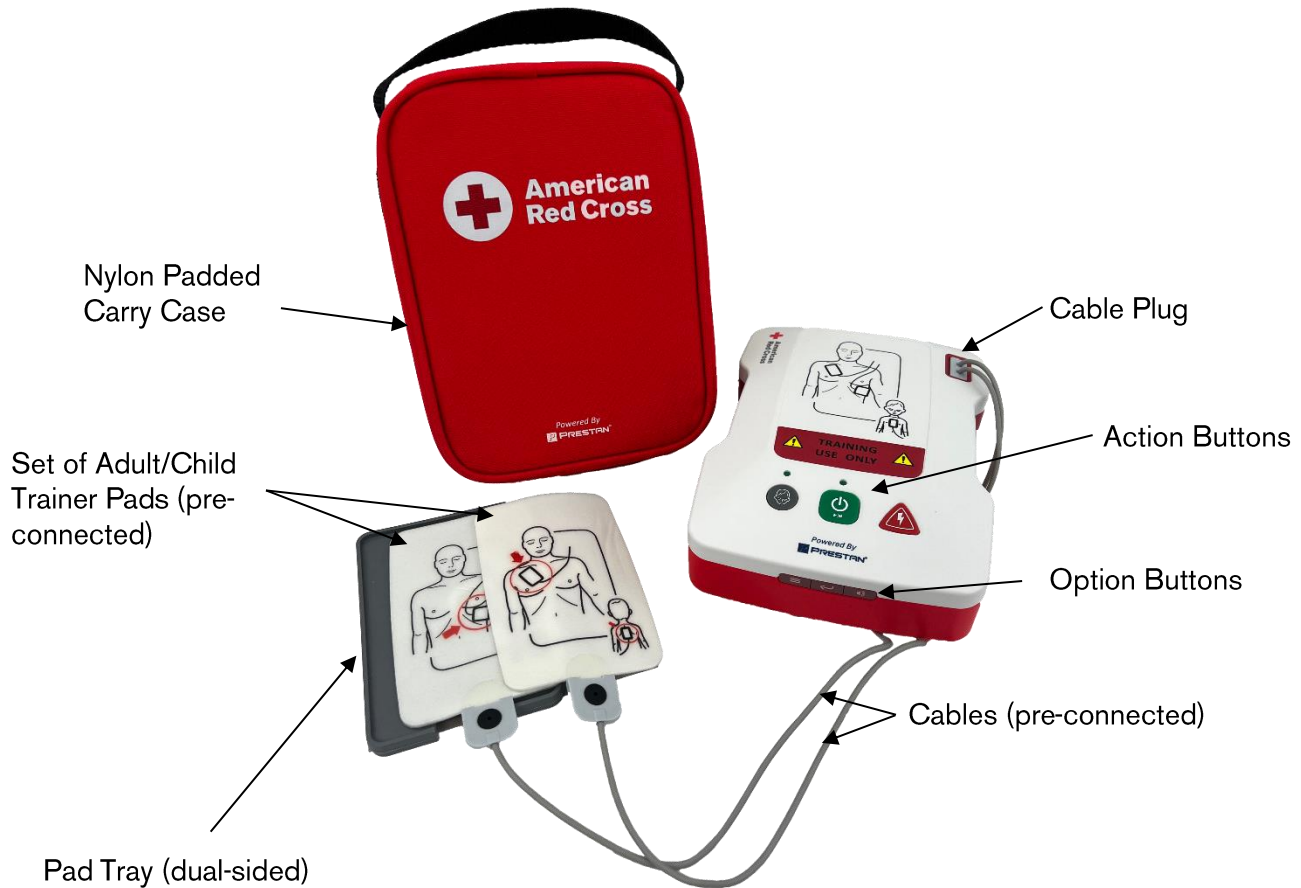


American Red Cross Premium AED Trainer

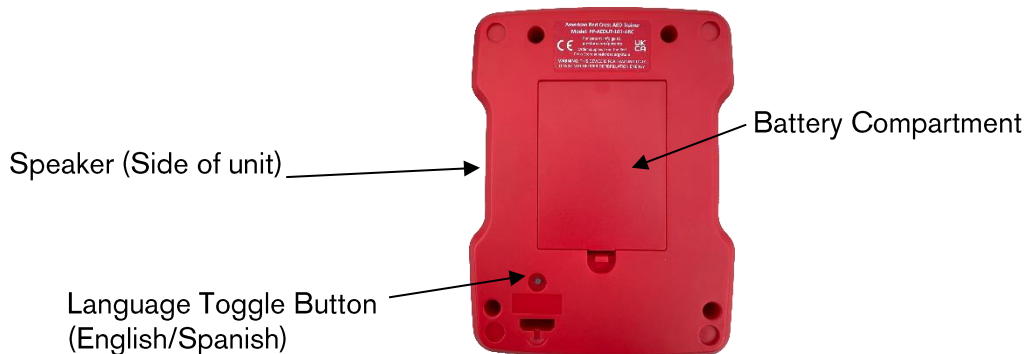
Powered by PRESTAN



TRAINER GUIDE



Back of Unit





ACTION BUTTONS



Child Button

On/Off/Pause Button

Shock Button

CHILD BUTTON

- After the unit is turned on using the green button, there is an audible prompt to select the Child Button, if desired.
- The indicator light above the Child Button will light up when the Child option has been selected and is active.
- The indicator light turns off if the unit is paused and turns back on when resuming operation.

ON / OFF / PAUSE BUTTON

1. Push the green button to start program / the indicator light above the button will turn on.
2. Push the green button again to pause program / indicator light will blink, indicating pause. Push the green button again to resume.
3. When the unit is running, push and hold the green button for 3 seconds to shut off unit.

SHOCK BUTTON

- Red Shock Button will flash when program instructs to deliver shock.
- In Semi-Automatic mode, pushing the Shock Button while it is flashing will stop the flashing and resume the program.
- In Automatic mode, the Shock Button will flash approximately 6 times before auto-shocking and resuming the program.



OPTION BUTTONS



Menu Button

Selection Button

Volume Button

MENU BUTTON

The Menu Button allows customization of 4 options and can be used at any time. Push the Menu Button repeatedly to scroll through and hear each selection currently active for each of the options (see 1-4 below). Use the Selection Button to scroll through and change these options.

SELECTION BUTTON

Use the Selection Button with the Menu Button to change settings for each of the 4 Menu options. Repeatedly press Selection Button to hear current selection and scroll to the next. After you hear the option desired, stop pressing the button and that selection will remain active. A beep will sound to confirm the selection is set.

1. Available Training Scenarios:
 - a. Scenario 1 → Shock • Shock • Shock (default)
 - b. Scenario 2 → Shock • No Shock • No Shock
 - c. Scenario 3 → No Shock • No Shock • No Shock
 - d. Scenario 4 → Shock • No Shock • Shock
 - e. Scenario 5 → Shock • Shock • No Shock
2. Semi-Automatic / Automatic toggle
 - a. Semi-Automatic → Must push flashing Shock Button to deliver shock (default)
 - b. Automatic → Unit will deliver shock when Shock Button is lit
3. Ventilations toggle
 - a. Ventilations On → Time provided in scenarios to give breaths (default)
 - b. Ventilations Off → No time provided in scenarios to give breaths
4. Metronome toggle
 - a. Metronome On → Audible ticks heard for compression rhythm (default)
 - b. Metronome Off → No ticks heard during compression section of program

See chart on Page 7 for Ventilations / Metronome interaction.

VOLUME BUTTON

- Toggle the Volume Button between 3 volume levels.
- Works independently of Menu and Selections Buttons.



SETTINGS

	Ventilations On	Ventilations Off
CPR Metronome On	<ol style="list-style-type: none"> 1. Patient is analyzed. Shock or no shock is advised based on user scenario setting. 2. Audible prompt "BEGIN CPR" starts compression cycle. 3. Metronome beats and audible prompt notes 10, 20, and 30 compression counts. 4. After 30 compression beats, the metronome pauses for an audible prompt to "GIVE 2 BREATHS". 5. Compressions and breaths continue for 5 cycles (2 minutes). 6. Unit analyzes patient. 7. Cycles repeat indefinitely following scenario shock pattern until unit is manually shut off. 	<ol style="list-style-type: none"> 1. Patient is analyzed. Shock or no shock is advised based on user scenario setting. 2. Audible prompt "BEGIN CPR" starts compression cycle. 3. Compression beats with audible prompt to "CONTINUE CPR" every 24 seconds (x4). 4. Compressions continue for 2 minutes. 5. Unit analyzes patient. 6. Cycles repeat indefinitely following scenario shock pattern until unit is manually shut off.
CPR Metronome Off	<ol style="list-style-type: none"> 1. Patient is analyzed. Shock or no shock is advised based on user scenario setting. 2. Audible prompt "BEGIN CPR" starts compression cycle. 3. Audible prompt notes 10, 20, and 30 compression counts. 4. After time for 30 compressions, the metronome pauses for an audible prompt to "GIVE 2 BREATHS". 5. Compressions and breaths continue for 5 cycles (2 minutes). 6. Unit analyzes patient. 7. Cycles repeat indefinitely following scenario shock pattern until unit is manually shut off. 	<ol style="list-style-type: none"> 1. Patient is analyzed. Shock or no shock is advised based on user scenario setting. 2. Audible prompt "BEGIN CPR" starts compression cycle. 3. Silence except for audible prompt to "CONTINUE CPR" every 24 seconds (x4). 4. Cycle stops at 2 minutes. 5. Unit analyzes patient. 6. Cycles repeat indefinitely following scenario shock pattern until unit is manually shut off.



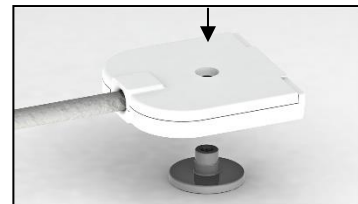
CARE AND CLEANING INSTRUCTIONS

- Store the Red Cross Premium AED Trainer in its case and in a cool, dry area.
- Return the training pads and cables to their respective storage pouches located on the interior lid of the unit's cover. If pads and cables are stacked on top of the unit, the cables may imprint grooves/indentations into the surface of the pads.
- If the unit is being stored for long periods, remove batteries to protect against corrosion.
- Never pick up or carry the unit by the cables.
- The Red Cross Premium AED Trainer should be kept clean. If the unit becomes dirty, wipe with a clean, damp, soft cloth. If the Trainer is extremely dirty, common cleaners can be used cautiously with a minimum amount of abrasion to ensure the life of the unit. Do not submerge unit in water.

PAD REPLACEMENT

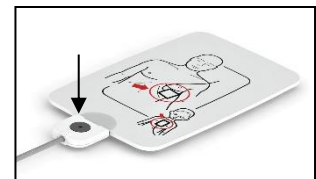
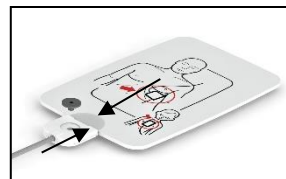
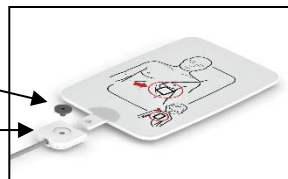
Training Pads will last approximately 100 uses if manikin is kept clean and free from dust and debris. When pad replacement is needed, it is good practice to replace both pads at the same time.

1. Release the existing pads from the gray cable connectors by popping out the black pad connector pins with the tip of a ball point pen.
2. Slide the pads out from the cable connectors.
3. Insert new pads into the cable connectors.
4. Use the pad connector pins to lock the pads in place.

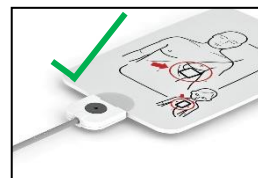


- Insert pad into cable connector (be sure the pad graphics are on same side as the large head of the connector pin and that the connector pin snugly fits into the indentation in the cable connector)

Connector Pin
Cable Connector



- Ensure pad is not upside down
- If the pad has a protective backing over the adhesive (replacement pads), remove and dispose of this and adhere the pads to the double-sided pad case



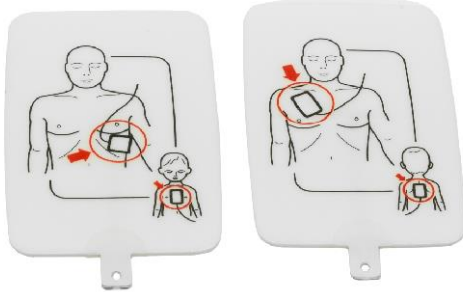


TROUBLESHOOTING GUIDE

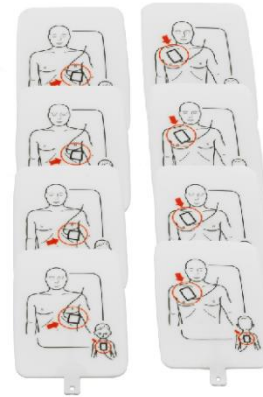
SYMPTOM	POSSIBLE ISSUES OR COMMENTS	SOLUTIONS
Unit does not turn on	<ul style="list-style-type: none"> Unit must be manually turned on Batteries are not properly installed Batteries are dead or are missing 	<ul style="list-style-type: none"> Push green power button Re-orient batteries Replace batteries
Both pads are attached to manikin, but unit will not advance to analysis	<ul style="list-style-type: none"> Operational solution Pad is inserted upside down in the cable connector Pad or Adhesive worn out 	<ul style="list-style-type: none"> Ensure pads are pressed on firmly, specifically so that the sensor in the center of the adhesive is touching a surface Push out black connector pin, flip pad around and re-secure with black connector pin Replace pads
Unit proceeds to "Analyzing" before both pads have been placed on the manikin	<ul style="list-style-type: none"> Pads not properly positioned on tray Pad may be riding up pad tray wall 	<ul style="list-style-type: none"> Re-position pad on tray to lay completely flat so it is not touching side walls
Unit delivers shock before shock button is pressed	<ul style="list-style-type: none"> Device is In Automatic mode 	<ul style="list-style-type: none"> Change back to Semi-Automatic Mode
Unit prompts "Replace Batteries"	<ul style="list-style-type: none"> Device will run approximately 10 more hours with low batteries 	<ul style="list-style-type: none"> Replace batteries within 10 hours
Device suddenly shuts down or voice prompts are distorted	<ul style="list-style-type: none"> Batteries are very low. 	<ul style="list-style-type: none"> Install new batteries
Pad pulls out from pad connector	<ul style="list-style-type: none"> Check for black connector pin missing 	<ul style="list-style-type: none"> Install new black connector pin
Pad will not stick to the manikin	<ul style="list-style-type: none"> Adhesive is worn out 	<ul style="list-style-type: none"> Replace pads
Grooves/indentations are appearing on the surface of the pads	<ul style="list-style-type: none"> The cables are indenting into the surface of the pads from improper storage placement 	<ul style="list-style-type: none"> Store cables and pads in their respective pouches in the interior lid of the unit's carry bag



PARTS & ACCESSORIES



PP-UTPAD-1
Single set of Adult/Child Training
Pads for the AED UltraTrainer



PP-UTPAD-4
Four (4) sets of Adult/Child Training
Pads for the AED UltraTrainer